

12-/24-Port Gigabit IEEE 802.3at PoE+ Managed Injector Hub



PLANET's newly-improved **(H)POE Managed PoE Injector Hub series**, a quick high-density rack-mountable managed PoE solution, is designed to perfectly upgrade an existing network infrastructure to IEEE 802.3at Power over Ethernet Plus network system without replacing the existing Ethernet Switch. The (H)POE Managed PoE Injector Hub series' management functions have been enhanced to include TLSv1.2 and TLSv1.3 protocols, PLANET DDNS/Easy DDNS service, PLANET NMS system, PLANET CloudViewer, and more.

Cybersecurity Network Solution to Minimize Security Risks

The cybersecurity feature included to protect the (H)POE Managed PoE Injector Hub series management in a mission-critical network virtually needs no effort and cost to install. Both TLSv1.2 and TLSv1.3 protocols are utilized to provide strong protection against advanced threats. The network administrator can now construct highly-secure corporate networks with considerably less time and effort than before.



Remote Management Solution

PLANET's **Universal Network Management System (UNI-NMS)** and CloudViewer app support IT staff by remotely managing all network devices and monitoring PDs' operational statuses. Thus, they're designed for both the enterprises and industries where deployments of PDs can be as remote as possible, without having to go to the actual location once a bug or faulty condition is found. With the UNI-NMS or CloudViewer app, all kinds of businesses can now be speedily and efficiently managed from one platform.

Interface

- **24-/48-port RJ45**
 - 12-/24-port 10/100/1000Mbps "Data input"
 - 12-/24-port 10/100/1000Mbps "Data + Power output"
- One 10/100/1000BASE-T management port

Power over Ethernet

- Complies with IEEE 802.3at Power over Ethernet Plus mid-span PSE
- Up to 12/24 IEEE 802.3at/802.3af devices powered
- PoE power up to 30.8 watts (802.3at PoE+)/15.4 watts (802.3af PoE) for each PoE port
- Automatically detects PD
- Circuit protection prevents power interference between ports
- Remote power feeding up to 100m

PoE Management

- Per port PoE power schedule
- PoE function enable/disable
- Per port PoE function enable/disable
- PoE port power feeding priority
- PD classification detection
- PD alive check

Security

- SPI firewall
- MAC filtering
- System CA certificate for HTTPS

Management

- IPv4 and IPv6 dual stack management
- Web interface for remote management
- PLANET DDNS and Easy DDNS
- Network Time Protocol (NTP)
- System Maintenance
 - Firmware upload via HTTPS
 - Configuration upload/download via HTTPS
 - Reboot button for system reboot

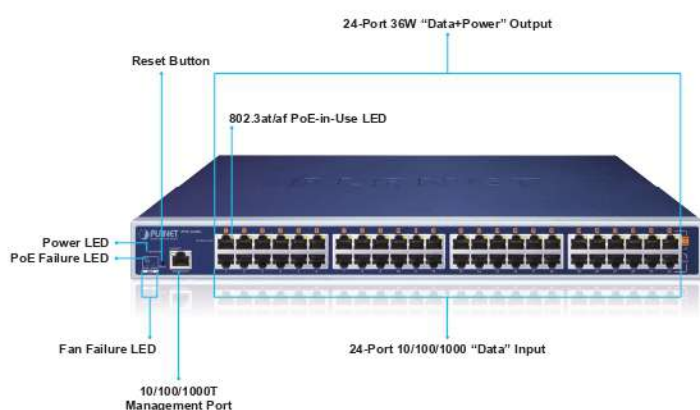


Perfect Managed PoE+ Injector Hub with Full Power Budget

The (H)POE Managed PoE Injector Hub series features PLANET **intelligent** functions where remote management can be done through **web user interface**. It provides 12/24 10/100/1000BASE-T Ethernet ports featuring **802.3at PoE+** injector function with a total PoE budget of 220 to 720 watts. Each PoE port can deliver up to 36-watt power over Cat.5/5e/6 Ethernet UTP cables which allow data and power to transmit simultaneously to a remote 802.3at/af powered device (PD).

The (H)POE Managed PoE Injector Hub series enables centralization of the power supply and optimizes the installation and power management of remote network devices, and provides a quick, safe and cost-effective Power over Ethernet network solution for small businesses and enterprises.

Model	PoE Standard	PoE+ Interface	Total PoE Budget
POE-1200G	IEEE 802.3at PoE+ IEEE 802.3af PoE	12	220 watts
HPOE-1200G		12	360 watts
POE-2400G		24	440 watts
HPOE-2400G		24	720 watts



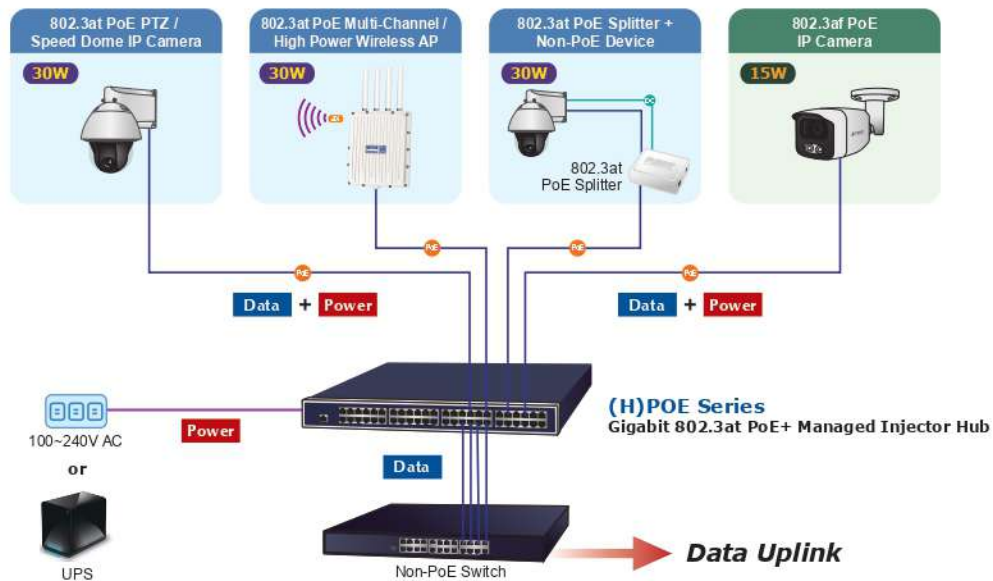
Quick and Easy PoE Network Deployment

The (H)POE Managed PoE Injector Hub series is installed between a regular Ethernet Switch and the PDs. There are totally 24/48 RJ45 STP ports on the front panel of the (H)POE Managed PoE Injector Hub series, of which the 12/24 ports on the lower part of the hub functioned as "Data input" while the other 12/24 ports on the upper part functioned as "PoE (Data and Power) output". Both power and data are transmitted simultaneously over the UTP cables to PDs without affecting the existing network performance and functions.

- Reset button for system reset to factory default
- PLANET Smart Discovery utility automatically finds PLANET devices on the network
- PLANET NMS system and CloudViewer for deployment management
- SNMP v1, v2c and v3 for system status monitoring
- SNMP trap for alarm notification of events
- System event log/remote syslog
- Scheduled System Power Rebooting
- Network Diagnostic
 - ICMPv6/ICMPv4 Remote Ping
 - Trace Route

Hardware

- 19-inch rack mountable; 1U height
- Reset button for resetting to default setting and system reboot
- LED indicators for PoE ready and PoE activity
- LED indicators for power alert and fan alert
- FCC Part 15 Class A, CE

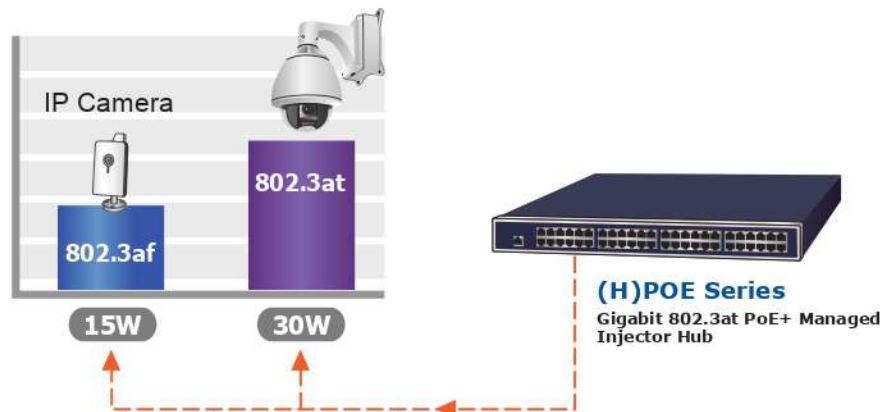


With data and Power over Ethernet from one unit, the (H)POE Managed PoE Injector Hub series can reduce power cable deployment and eliminate the need for dedicated electrical outlets on the wall, ceiling or any unreachable place.

IEEE 802.3at PoE+ Standard Compliance

The PoE in-line power adopting the **IEEE 802.3at Power over Ethernet Plus** standard makes the (H)POE Managed PoE Injector Hub series able to deliver per port up to **36 watts** of power to each remote PoE compliant PD. It possesses double amount of power capability than the conventional 802.3af PoE and is an ideal solution to satisfy the growing demand for higher power consuming network PDs, such as PTZ (pan, tilt and zoom), speed dome network cameras, color touch-screen or video and voice over IP (VoIP) telephones, multi-channel 802.11ac wireless LAN access points and other network devices.

PTZ/Speed Dome Camera



User-friendly Web Management Interface

To efficiently manage the PDs, the (H)POE Managed PoE Injector Hub series provides simple **Web management interface** in which administrators can control the system and PoE functions for PDs. It can automatically detect the power status of each port and show messages on its Web management interface. These features also provide users with a cost-effective way to manage the device via Internet whenever they are at work or at home.

Built-in Unique PoE Functions for Powered Device Management

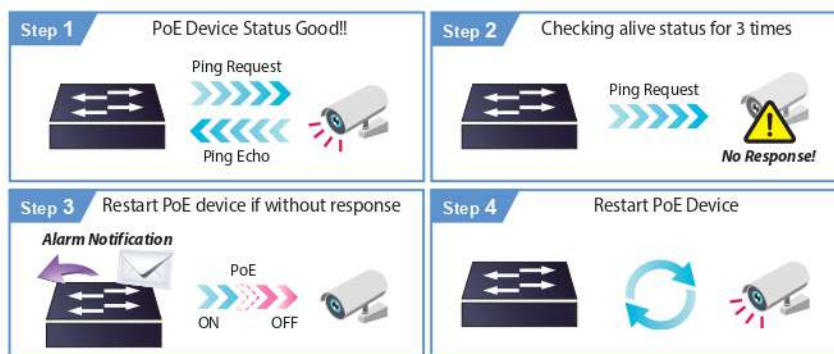
As it is the managed PoE Injector Hub for VoIP, wireless and surveillance networks, the (H)POE Managed PoE Injector Hub series features the following special PoE management functions:

- PoE schedule
- PD alive check
- Scheduled power recycling
- PoE usage monitoring

Intelligent Powered Device Alive Check

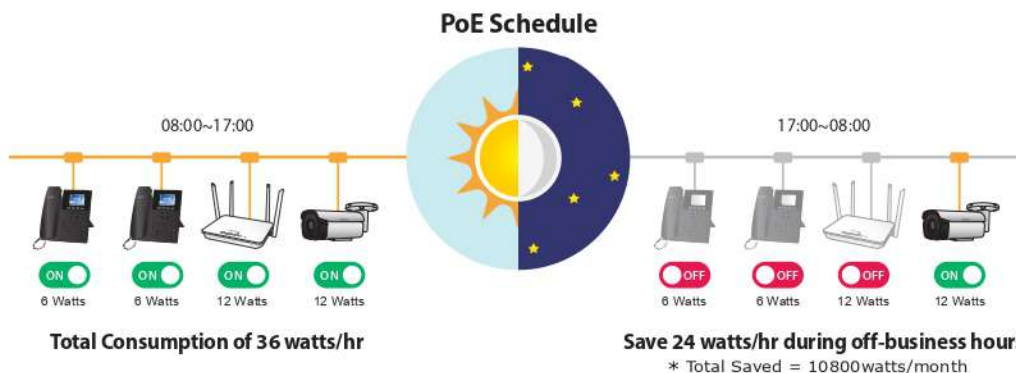
PLANET's Managed PoE products adopt not only Power over Ethernet technology, but also automated PD monitoring and real-time PoE status. The (H)POE Managed PoE Injector Hub series can be configured to monitor connected PD's status in real time via ping action through the uplinked Ethernet switch. Once the PD stops working and responding, the (H)POE Managed PoE Injector Hub series will recycle the PoE port power and bring the PD back to work. It also will greatly enhance the network reliability in that the PoE port will reset the PD power, thus reducing administrator's management burden.

PD Alive Check



PoE Schedule for Energy Savings

Under the trend of energy savings worldwide and contributing to environmental protection on the Earth, the (H)POE Managed PoE Injector Hub series can effectively control the power supply besides its capability of giving high watts power. The built-in "PoE schedule" function helps you to enable or disable PoE power feeding for each PoE port during specified time intervals and it is a powerful function to help SMBs or enterprises save power and money.



PoE Usage Monitoring

Via the power usage chart in the web management interface, the (H)POE Managed PoE Injector Hub series enables the administrator to monitor the status of the power usage of the connected PDs in real time. Thus, it greatly enhances the management efficiency of the facilities.

High Power Budget for PoE Extension

With 36-watt PoE output capability, the (H)POE Managed PoE Injector Hub series can extend much longer distance by using PLANET PoE Extender for powering up the PoE PD which can be installed over more than 100 meters away. By daisy-chaining multiple PLANET PoE Extenders, it offers the great flexibility of doubling, tripling or quadrupling the distance of PoE network.

Smart Fan Design for Silent Operation

The (H)POE Managed PoE Injector Hub series features a low noise design and an effective ventilation system. It supports the smart fan technology that automatically controls the speed of the built-in fan to reduce noise and maintain the temperature of the (H)POE Managed PoE Injector Hub series for optimal power output capability. The speed of the smart fan is displayed on the monitor. The (H)POE Managed PoE Injector Hub series is able to operate reliably, stably and quietly in any environment without affecting its performance.

Scheduled Power Rebooting

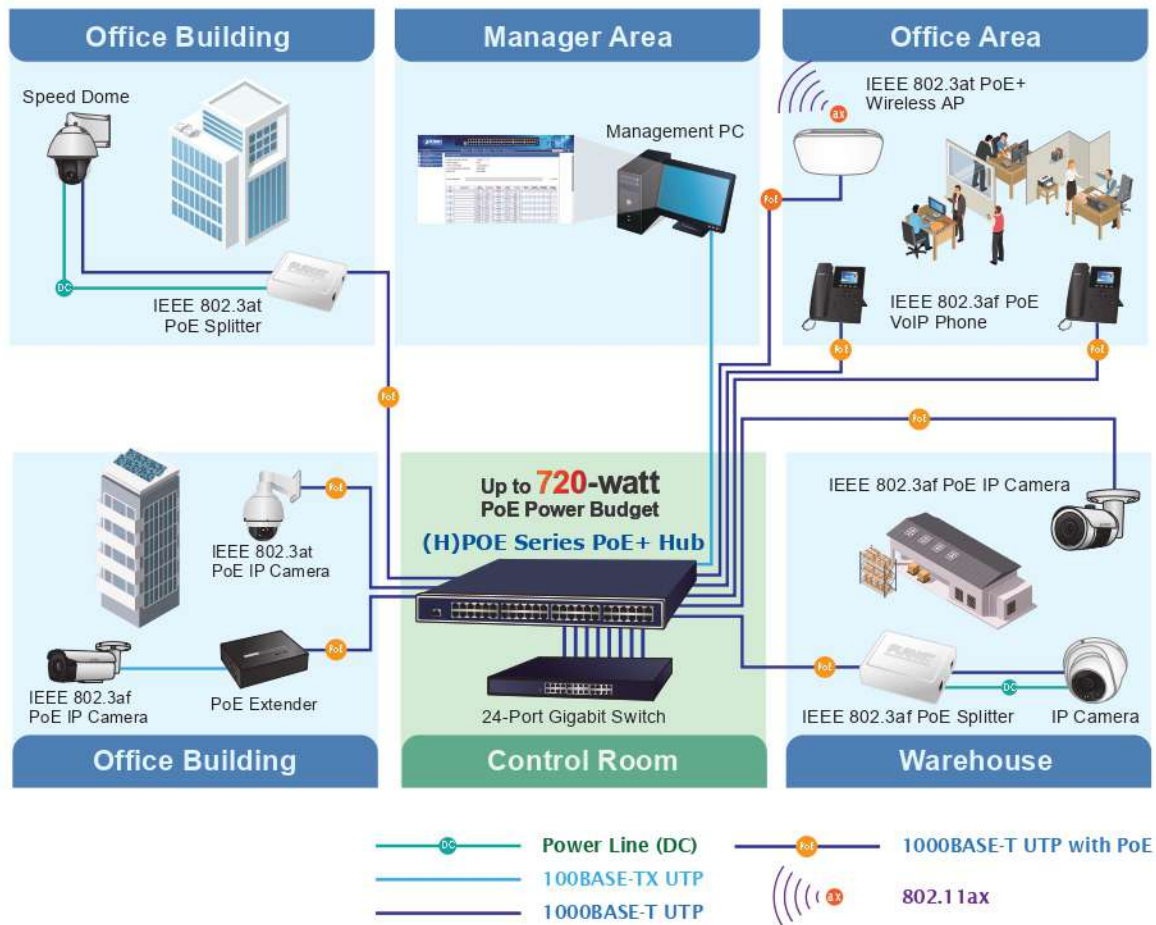
The (H)POE Managed PoE Injector Hub series can be scheduled to reboot at a specified time like every minute, every hour, every day to reduce the chance of PD device crash resulting from buffer overflow.

Applications

Gigabit PoE+ Network Deployment

The (H)POE Managed PoE Injector Hub series provides the easiest way to power your Ethernet devices such as IP camera on the ceiling and the wireless access point installed on the top of the building. With 12/24 10/100/1000 BASE-T Gigabit Ethernet ports, the (H)POE Managed PoE Injector Hub series supports full 54V DC power for any remote IEEE 802.3af/IEEE 802.3at powered device (PD).

To control the power system of your networking devices, the (H) POE Managed PoE Injector Hub series can directly co-work with network devices such as PoE IP phone to build VoIP telephony network in the office. Furthermore, the PoE hub can be directly connected to any third-party IEEE 802.3af/802.3at compliant devices installed within 100 meters.



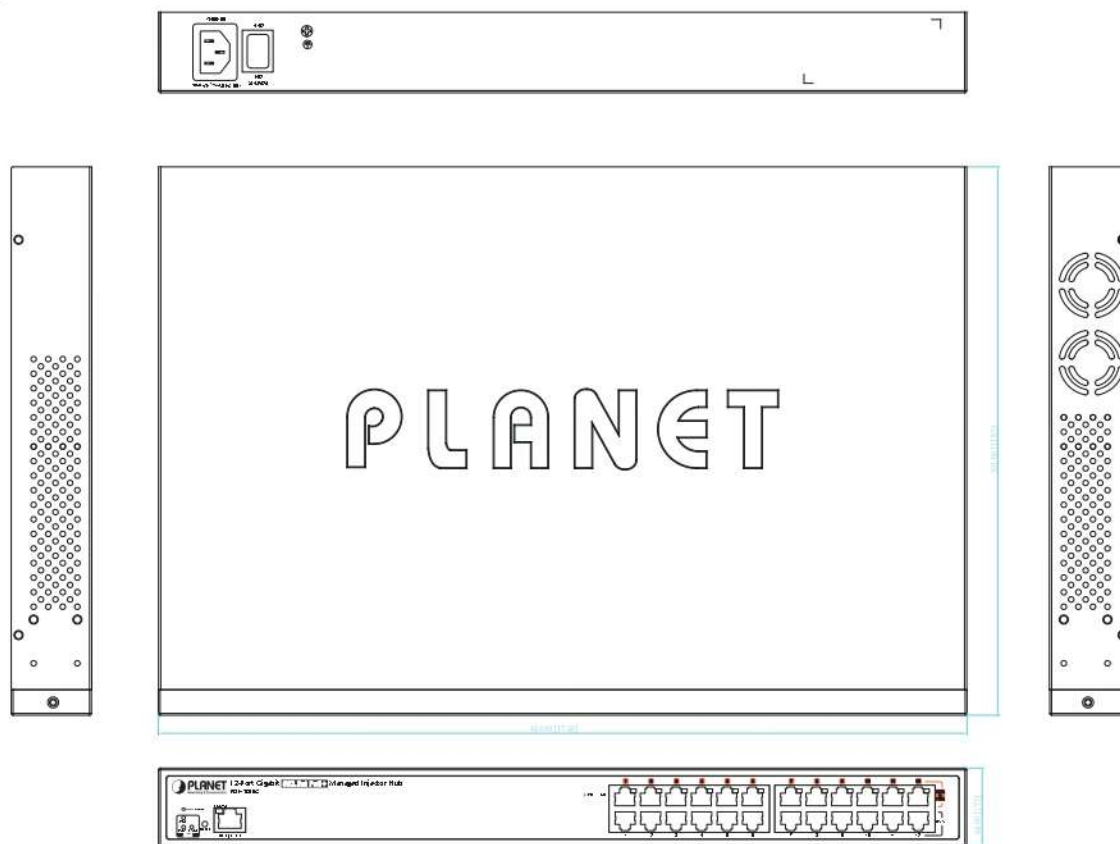
Specifications

Product		POE-1200G	HPOE-1200G	POE-2400G	HPOE-2400G
Hardware					
Hardware Version		6			
Interface	"Data" Input Ports	12 x RJ45	12 x RJ45	24 x RJ45	24 x RJ45
	"Data + Power" Output Ports	12 x RJ45	12 x RJ45	24 x RJ45	24 x RJ45
	Management Port	1 x RJ45; 10/100/1000BASE-T, auto-negotiation, auto-MDI/MDIX			
Data Rate		10/100/1000Mbps			
Power Requirements		100-240V AC, 50/60 Hz, 4A	100-240V AC, 50/60 Hz, 8A	100-240V AC, 50/60 Hz, 8A	100-240V AC, 50/60 Hz, 12A
Power Consumption		251 watts/ 856 BTU	382 watts/ 1303 BTU	514 watts/ 1753 BTU	719 watts/ 2453 BTU
Ventilation		Smart Fan x 2			
Dimensions (W x D x H)		440 x 300 x 44mm			
Weight		3.6kg	3.9kg	4kg	4.3kg
Reset Button		< 5 sec: System reboot > 5 sec: Factory default			
LED		System: SYS PWR x 1 (Green) PoE Failure x 1 (Red) Fan 1 Failure x 1 (Red) Fan 2 Failure x 1 (Red) Per PoE Port: PoE-in-use x 1 (Amber) Management port x 1: LNK/ACT (Green)			
Network Cable		10BASE-T: 4-pair UTP Cat5 up to 100m (328ft) 100BASE-TX: 4-pair UTP Cat5 up to 100m (328ft) 1000BASE-T: 4-pair UTP Cat5e/6 up to 100m (328ft) EIA/TIA- 568 100-ohm STP (100m)			
Power over Ethernet					
PoE Power Supply Type		Mid-span			
PoE Power Output		Per port DC 54V 30.8/15.4 watts			
Power Pin Assignment		4/5(+), 7/8(-)			
PoE Power Budget		220 watts	360 watts	440 watts@0~40°C 400 watts@41~50°C Auto power budget control by over temperature protection function	720 watts@0~39°C 670 watts@40~49°C 620 watts@50°C Auto power budget control by over temperature protection function
Number of 802.3af PDs (Class 0, 1, 2, 3) can be powered		12	12	24	24
Number of 802.3at PDs (Class 1, 2, 3) can be powered		12	12	14	24
Number of 802.3at PDs (Class 0, 4) can be powered		7	12	14	24
Security					
Firewall		SPI Firewall			
Filtering		MAC Filtering			
Certificates		System CA Certificate for HTTPS			
Management					
Management Interface		Web, PLANET Smart Discovery Lite			
Secure Management Interface		TLSv1.2, TLSv1.3			
PoE Management		Power limit by consumption and classification PoE function enable/disable Per port PoE function enable/disable Per port PoE power schedule Power feeding priority PD alive check PD classification detection Current per port usage and status Total power consumption			

Management Feature	<p>IPv4 and IPv6 dual stack management</p> <p>Web interface for remote management</p> <p>PLANET DDNS and easy DDNS</p> <p>Network Time Protocol (NTP)</p> <p>System Maintenance</p> <ul style="list-style-type: none"> ■ Firmware upload via HTTPS ■ Configuration upload/download via HTTPS ■ Reboot button for system reboot ■ Reset button for system reset to factory default <p>PLANET Smart Discovery utility</p> <p>PLANET NMS system and CloudViewer for deployment management</p> <p>SNMP v1, v2c and v3 for system status monitoring</p> <p>SNMP trap for alarm notification of events</p> <p>System event log/remote syslog</p> <p>Scheduled system power rebooting</p> <p>Network Diagnostic</p> <ul style="list-style-type: none"> - ICMPv6/ICMPv4 remote ping - Trace route
Standards Conformance	
Regulatory Compliance	FCC Part 15 Class A, CE
Standards Compliance	<p>IEEE 802.3 10BASE-T Ethernet</p> <p>IEEE 802.3u 100BASE-TX Fast Ethernet</p> <p>IEEE 802.3ab 1000BASE-T Gigabit Ethernet</p> <p>IEEE 802.3at Power over Ethernet Plus</p> <p>IEEE 802.3af Power over Ethernet</p> <p>RFC 768: UDP</p> <p>RFC 791: IP</p> <p>RFC 2068 HTTP</p> <p>RFC 1157: SNMP v1</p> <p>RFC 1902: SNMP v2c</p> <p>RFC 2273: SNMPv3</p> <p>RFC 5424: Syslog</p>
Environments	
Operating	<p>Temperature: 0 ~ 50 degrees C</p> <p>Relative Humidity: 5 ~ 90% (non-condensing)</p>
Storage	<p>Temperature: -10 ~ 70 degrees C</p> <p>Relative Humidity: 5 ~ 90% (non-condensing)</p>

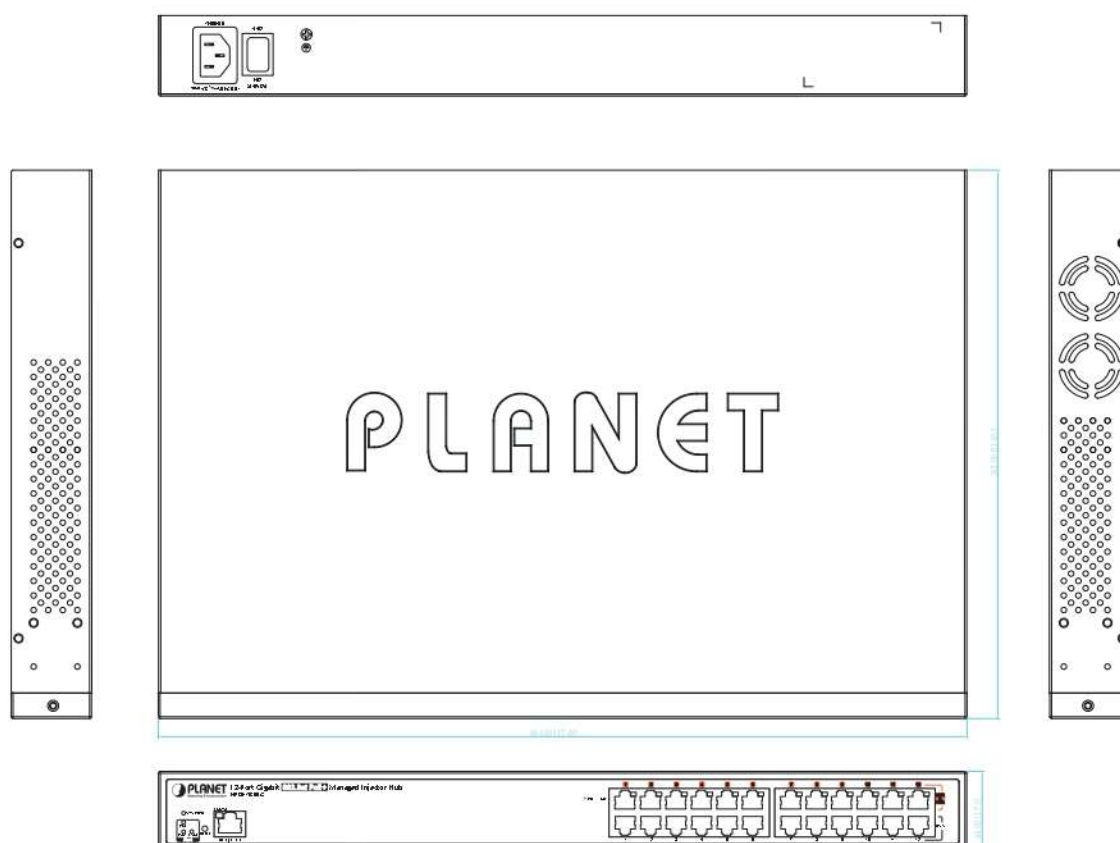
Dimensions

■ POE-1200G



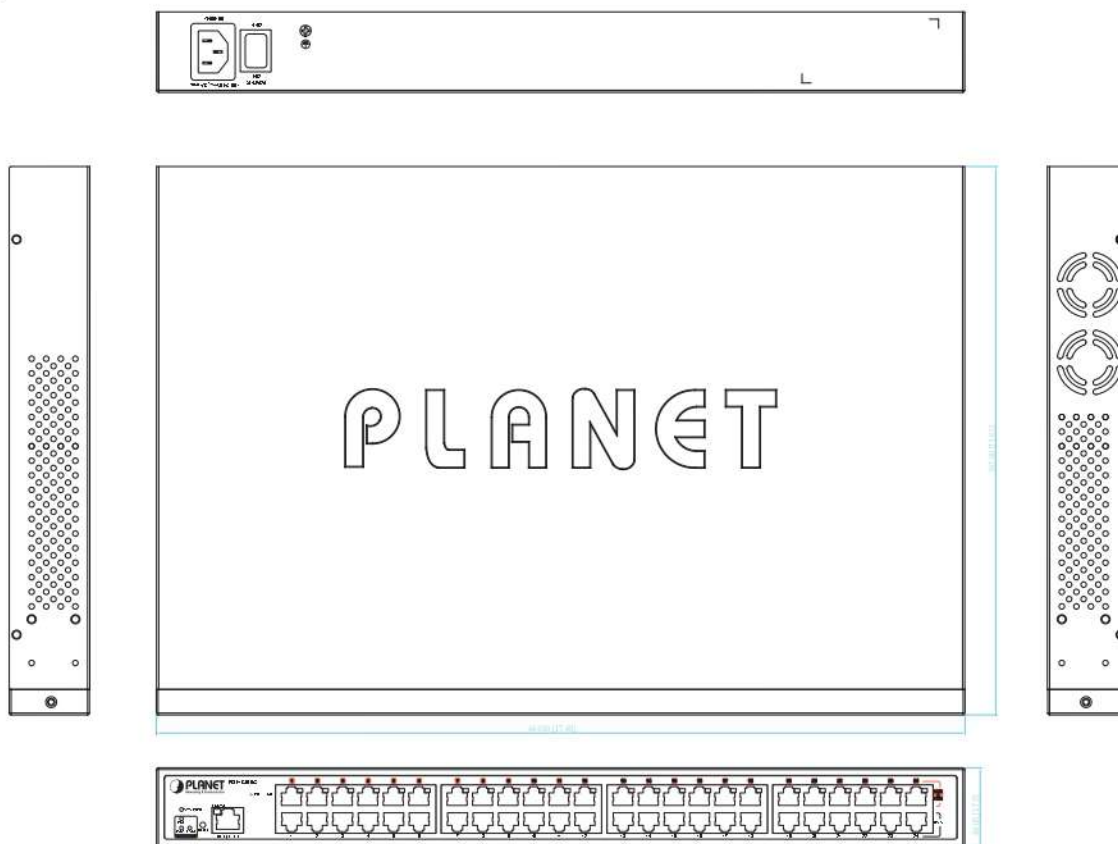
Unit: mm

■ HPOE-1200G



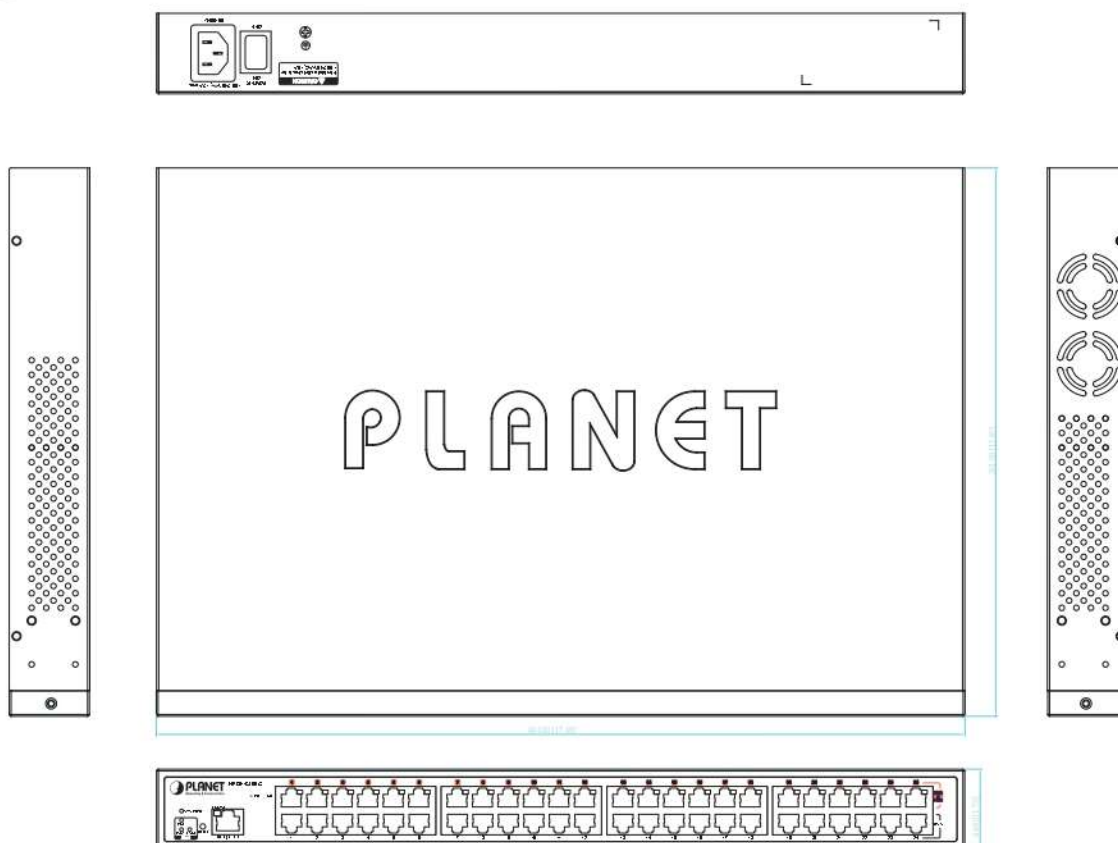
Unit: mm

■ POE-2400G



Unit: mm

■ HPOE-2400G



Unit: mm

Ordering Information

POE-1200G	12-Port Gigabit IEEE 802.3at PoE+ Managed Injector Hub (220 watts)
HPOE-1200G	12-Port Gigabit IEEE 802.3at PoE+ Managed Injector Hub (360 watts)
POE-2400G	24-Port Gigabit IEEE 802.3at PoE+ Managed Injector Hub (440 watts)
HPOE-2400G	24-Port Gigabit IEEE 802.3at PoE+ Managed Injector Hub (720 watts)

Related PoE Products

POE-161S	IEEE 802.3at Gigabit Power over Ethernet Plus Splitter with 5V/12VDC output (10/100/1000Mbps)
POE-162S	IEEE 802.3at Gigabit Power over Ethernet Plus Splitter with 12V/24VDC output (10/100/1000Mbps)
IPOE-162S	Industrial IEEE 802.3at Gigabit High Power over Ethernet Splitter
POE-E101	IEEE 802.3af Power over Ethernet Extender
POE-E201	IEEE 802.3at Power over Gigabit Ethernet Extender
POE-E202	1-Port 802.3at PoE+ to 2-Port 802.3af/at Gigabit PoE Extender
LRP-101CH	1-Port 10/100TX PoE PD + 1-Port Coax Long Reach PoE Injector
LRP-101UH	1-Port 10/100TX PoE PD + 1-Port UTP Long Reach PoE Injector

PLANET Technology Corporation

11F., No.96, Minquan Rd., Xindian Dist., New Taipei City 231,
 Taiwan (R.O.C.)

Tel: 886-2-2219-9518

Email: sales@planet.com.tw

Fax: 886-2-2219-9528

www.planet.com.tw



POE-1200G/POE-2400G/HPOE-1200G/HPOE-2400G

PLANET reserves the right to change specifications without prior notice. All brand names and trademarks are property of their respective owners. Copyright © 2023 PLANET Technology Corp. All rights reserved.