



AX1500 Next-Gen Wi-Fi 6 Router

Next-Gen Wi-Fi For All



Archer AX1500



Faster AX Wi-Fi
Speeds up to 1.5 Gbps



Ultra-Low Latency
by AX Tech



Connect More Devices
with OFDMA



Responsive Processing
with 1.5 GHz Triple-Core CPU



Full Gigabit
Ports

Highlights

Wi-Fi 6 | 802.11 AX[™] Future-Proof Your Wi-Fi

Improved Efficiency, More Connections

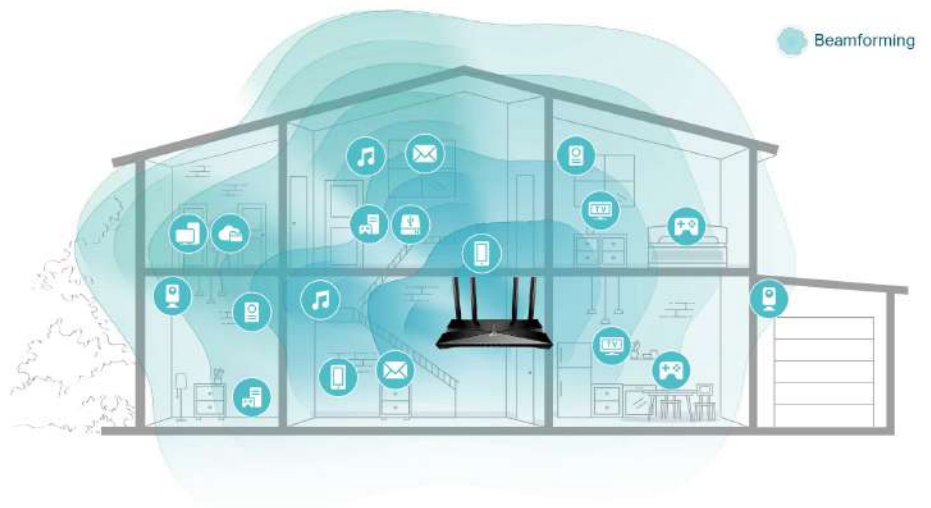
Add more Wi-Fi devices to your network without dragging the performance, as Archer AX1500 with Wi-Fi 6 builds a more efficient network that increases the average throughput by 4 times and serves more devices.

Immersive Gaming, Smooth Streaming

Enjoy stable network for online gaming and live streams with flawless video and clear audio. OFDMA allows clients to transmit both on uplink and downlink using one band at one time, which cut the latency and ensures a responsive network.

Cover 3+ Rooms with Minimal Interference

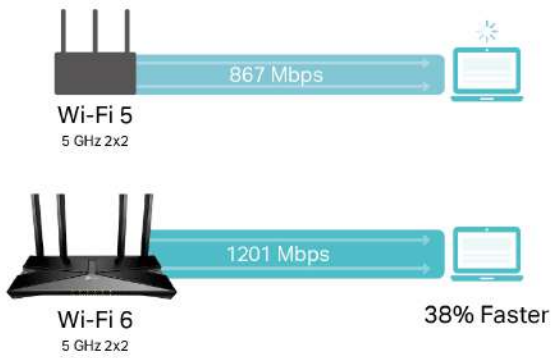
With clearer and stronger signal generated with Wi-Fi 6 and Beamforming technology, Archer AX1500 delivers data to devices far away by focusing less-interfered wireless signal towards them.



Highlights

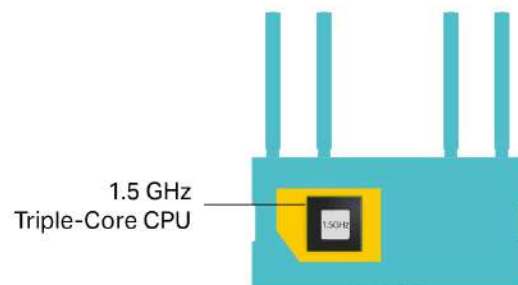
Faster Wireless Connection

4-Streams Wi-Fi offers connection at over 1 Gbps speed for newer mobile devices, reducing wait time by 30% while downloading huge files including 4K movies and games.

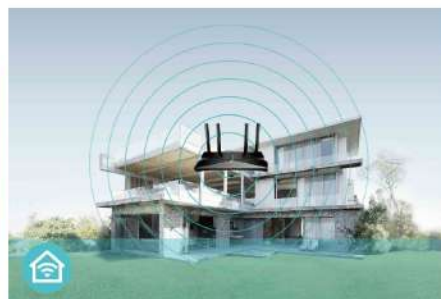


Powerful and Stable

Every click you make, responds quicker. A 1.5 GHz triple-core CPU handles data throughput up to multi-gigs and minimizes the latency within your home network, delivering you a smooth experience.



Features



Speed

- **AX Tech** – 802.11ax (also known as Wi-Fi 6) features advanced technologies including OFDMA and 1024QAM, drastically increasing the speed and efficiency of the entire network
- **Ultimate Wireless Speed** – 300 Mbps on 2.4 GHz (802.11n) + 1201 Mbps on 5 GHz (802.11ax)
- **1.5 GHz triple-core CPU** – Handles data throughput up to multi-gigs and minimizes the latency within your home network
- **Gigabit Internet Access** – Take full advantages of broadband speeds up to 1 Gbps

Wi-Fi Range

- **Ultimate Range Wi-Fi** – Four external antennas deliver a Wi-Fi signal to every corner of your home, making all of your connections more efficient and stable
- **Beamforming Technology** – Concentrates Wi-Fi signals towards individual devices to ensure stronger connections

Reliability

- **Secure VPN Access** – Connects to a private network with a safe and secure OpenVPN and PPTP VPN connection
- **Airtime Fairness** – Balances bandwidth of connected devices to improve overall throughput and efficiency
- **Smart Connect** – Intelligently switches each device's connection to the optimum available Wi-Fi band
- **Quality of Service** – Prioritizes devices for optimum performance when needed

Features



Ease of Use

- **Intuitive Web UI** – Ensures quick and simple installation without hassle
- **Fast Encryption** – One-touch WPA wireless security encryption with the WPS button
- **Easy On/Off** – Turn on/off wireless function using the Wi-Fi button
- **Power On/Off** – Conveniently power on or off your router as required
- **Hassle-free Management with Tether App** – Network management is made easy with the TP-Link Tether App, available on any Android and iOS device

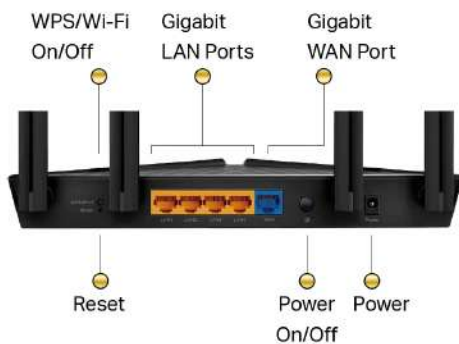
Security

- **Guest Network** – Keeps your main network secure by creating a separate network for friends and visitors
- **Access Control** – Establishes a whitelist or blacklist to allow or restrict certain devices to access the internet
- **Parental Controls** – Restricts internet access time and contents for children devices
- **Encryptions for Secure Network** – WPA-PSK and WPA2-PSK encryptions provide active protection against security threats

Specifications

Hardware

- Ethernet Ports: One Gigabit WAN Port, four Gigabit LAN Ports
- Hardware: 1.5 GHz Triple-Core CPU
- Buttons: WPS/Wi-Fi Button, Power On/Off Button, Reset Button
- Antennas: Four External Antennas
- Dimensions (W x D x H): 10.2 × 5.3 × 1.5 in (260.2 × 135.0 × 38.6 mm)



Wireless

- Wireless: 1201 Mbps (5 GHz, 11ax) + 300 Mbps (2.4 GHz, 11n), compatible with 11a/b/g/n/ac Wi-Fi standards
- Frequency: 2.4 GHz and 5 GHz
- Transmit Power:
 - CE: <20dBm(2.4 GHz), <23dBm(5.15 GHz~5.25 GHz)
 - FCC: <30dBm(2.4 GHz & 5.15 GHz~5.825 GHz)
- Reception Sensitivity:
 - 5 GHz:
 - 11a 6Mbps: -97dBm, 11a 54Mbps: -79dBm
 - 11ac VHT20_MCS0: -96dBm, 11ac VHT20_MCS11: -66dBm
 - 11ac VHT40_MCS0: -94dBm, 11ac VHT40_MCS11: -63dBm
 - 11ac VHT80_MCS0: -91dBm, 11ac VHT80_MCS11: -60dBm
 - 11ax HE20_MCS0: -95dBm, 11ax HE20_MCS11: -63dBm
 - 11ax HE40_MCS0: -92dBm, 11ax HE40_MCS11: -60dBm
 - 11ax HE80_MCS0: -89dBm, 11ax HE80_MCS11: -58dBm
 - 2.4 GHz:
 - 11g 6Mbps: -94 54Mbps: -77.5
 - HT20-MCS0: -93 MCS7: -76
 - HT40-MCS0: -91 MCS7: -73
- Wireless Function: Enable/Disable Wireless Radio, WMM
- Wireless Security: 64/128-bit WEP, WPA/WPA2, WPA-PSK/WPA2-PSK encryptions

Specifications

Software

- **Quality of Service:** Device Prioritisation
- **WAN Type:** Dynamic IP/Static IP/PPPoE/PPTP(Dual Access)/L2TP(Dual Access)
- **Management:** Access Control, Local Management, Remote Management
- **DHCP:** Server, DHCP Client List, Address Reservation
- **Port Forwarding:** Port Forwarding, Port Triggering, UPnP, DMZ
- **Dynamic DNS:** DynDns, NO-IP, TP-Link
- **Access Control:** Parental Controls, Local Management Control, Host List, White List, Black List
- **Firewall Security:** SPI Firewall, IP and MAC Address Blocking
- **Protocols:** IPv4, IPv6
- **Guest Network:** 2.4 GHz Guest Network, 5 GHz Guest Network

Others

- **Certification:**
CE, FCC, RoHS
- **System Requirements:**
Internet Explorer 11+, Firefox 12.0+, Chrome 20.0+, Safari 4.0+, or other JavaScript-enabled browser
Cable or DSL Modem
Subscription with an internet service provider (for internet access)
- **Environment:**
Operating Temperature: 0°C~40°C (32°F ~104°F)
Operating Humidity: 10%~90% non-condensing
- **Package Contents Wireless**
Router Archer AX1500
Power Adapter
RJ45 Ethernet Cable
Quick Installation Guide

For more information, please visit

<http://www.tp-link.com/products/details/Archer-AX1500.html>

©2021 TP-Link

*Maximum wireless signal rates are the physical rates derived from IEEE Standard 802.11 specifications. Actual wireless data throughput and wireless coverage are not guaranteed and will vary as a result of network conditions, client limitations, and environmental factors, including building materials, obstacles, volume and density of traffic, and client location.

†Use of OFDMA and 1024-QAM requires clients to also support these functions.

*4x average throughput refers to 4x increase in median throughput under dense environment (i.e. 8+ Wi-Fi 6 devices connected with combined speeds not higher than ISP's offer) compared to a 2x2 11ac wave 2 router.

*1,000 Mbps internet speeds require compatible service plan and equipment.