

**Industrial L3 Multi-Port Gigabit
Managed Ethernet Switch**

IGS-6329 DIN-rail Series
Quick Installation Guide

Table of Contents

1. Package Contents	3
2. Requirements	4
3. Wiring the Power Inputs.....	5
3.1 Grounding the Device.....	6
4. Terminal Setup	7
4.1 Logging on to the Console.....	8
4.2 Configuring IP Address via Console	10
4.3 Storing Current Switch Configuration	11
5. Starting Web Management	12
5.1 Logging in to the Industrial Managed Switch	12
5.2 Saving Configuration via Web	16
6. Recovering Back to Default Configuration.....	17
7. Customer Support	18

1. Package Contents

Thank you for purchasing PLANET L3 Industrial Managed Switch, IGS-6329 DIN-rail series. The descriptions of these models are as follows:

The descriptions of these models are shown below:

IGS-6329-8UP2S2X	Industrial L3 8-Port 10/100/1000T 802.3bt PoE + 2-Port 1G/2.5G SFP + 2-Port 10G SFP+ Managed Ethernet Switch
IGS-6329-8UP2S4X	Industrial L3 8-Port 10/100/1000T 802.3bt PoE + 2-Port 1G/2.5G SFP + 4-Port 10G SFP+ Managed Ethernet Switch

“Industrial Managed Switch” mentioned in this Quick Installation Guide refers to the above models.

Open the box of the **Industrial Managed Switch** and carefully unpack it. The box should contain the following items:

Item	IGS-6329-8UP2S4X	IGS-6329-8UP2S2X
The Industrial Managed Switch	■	■
DB9 to RJ45 Interface RS232 Console Cable	■	■
QR Code Sheet	■	■
Wall Mounting Kit	■	■
RJ45 Dust Cap	9	9
SFP Dust Cap	6	4

If any of these are missing or damaged, please contact your dealer immediately. If possible, retain the carton including the original packing materials to enable you to repack the product in case there is a need to return it to us for repair.

2. Requirements

The Industrial Managed Switch provides local and remote login interface for management purposes. The following equipment is necessary for further management:

- **Workstations** running Windows 7/8/10/11, macOS 10.12 or later, Linux Kernel 2.6.18 or later, or other modern operating systems are compatible with TCP/IP Protocols.
- Workstations are installed with Ethernet NIC (Network Interface Card).
- **Serial Port Connection** (Terminal)
 - The above Workstations come with **COM Port** (DB9) or USB-to-RS232 converter.
 - The above Workstations have been installed with **terminal emulator**, such as Hyper Terminal included in Windows XP/2003, putty or tera term.
 - **Serial cable** -- one end is attached to the RS232 serial port, while the other end to the **console port** of the Industrial Managed Switch.
- **Ethernet Port Connection**
 - **Network cables** -- Use standard network (UTP) cables with RJ45 connectors.
 - The above PC is installed with **Web browser**.



It is recommended to use Google Chrome, Microsoft Edge or Firefox to access the Industrial Managed Switch. If the Web interface of the Industrial Managed Switch is not accessible, please turn off the anti-virus software or firewall and then try it again.

3. Wiring the Power Inputs

The Upper Panel of the **Industrial Managed Switch** indicates a power socket and consists of one green terminal block connector within 6 contacts. Please follow the steps below to insert the power wire.

1. Insert positive/negative DC power wires into Contacts 1 and 2 for Power 1, or Contacts 5 and 6 for Power 2.

■ IGS-6329-Series: DC 48-54V

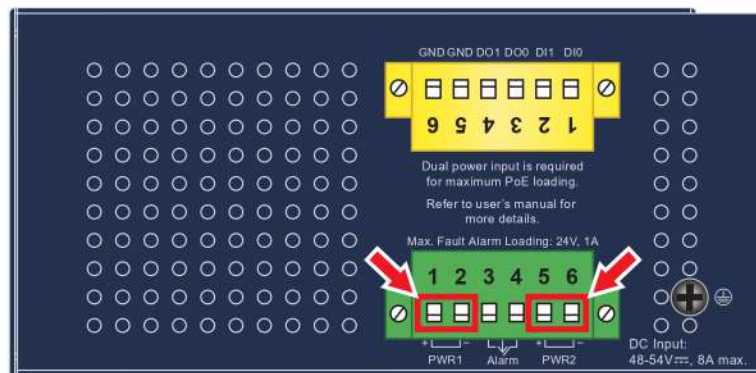


Figure 3-1: IGS-6329-Series Upper Panel



Note

Dual power input is required for maximum PoE loading

■ **Single power** input: Maximum **240-watt** PoE budget

■ **Dual power** input: Maximum **360-watt** PoE budget



Caution

PWR1 and PWR2 must provide **exactly the same DC voltage** for power load balance while operating with dual power input.

Tighten the wire-clamp screws for preventing the wires from loosening.

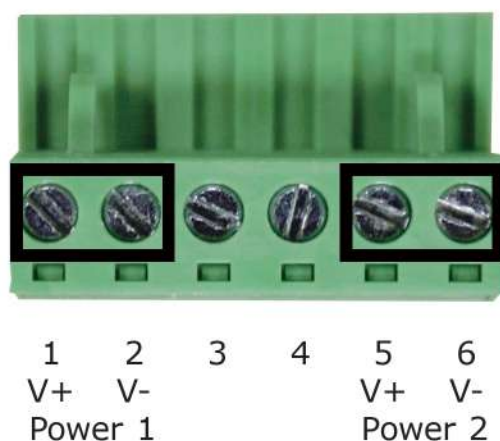


Figure 3-2: The pin of 6-contact terminal block connector

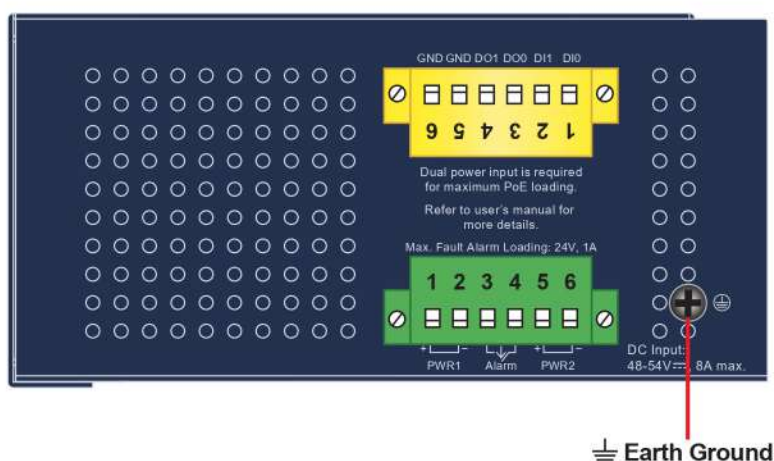


Note

1. The wire gauge for the terminal block should be in the range from **12** to **24 AWG**.
2. Please check the wire AWG Ampere specification before connecting PLANET Industrial Managed Switch.

3.1 Grounding the Device

Users **MUST** complete grounding wired with the device; otherwise, a sudden lightning could cause fatal damage to the device.



Earth Ground

4. Terminal Setup

To configure the system, connect a serial cable to a COM port on a PC or notebook computer and to RJ45 type serial (console) port of the Industrial Managed Switch.

IGS Industrial Managed Switch



Console Port
115200,N,8,1



RJ45 to DB9 RS232 Cable

PC/Workstation with
Terminal Emulation Software

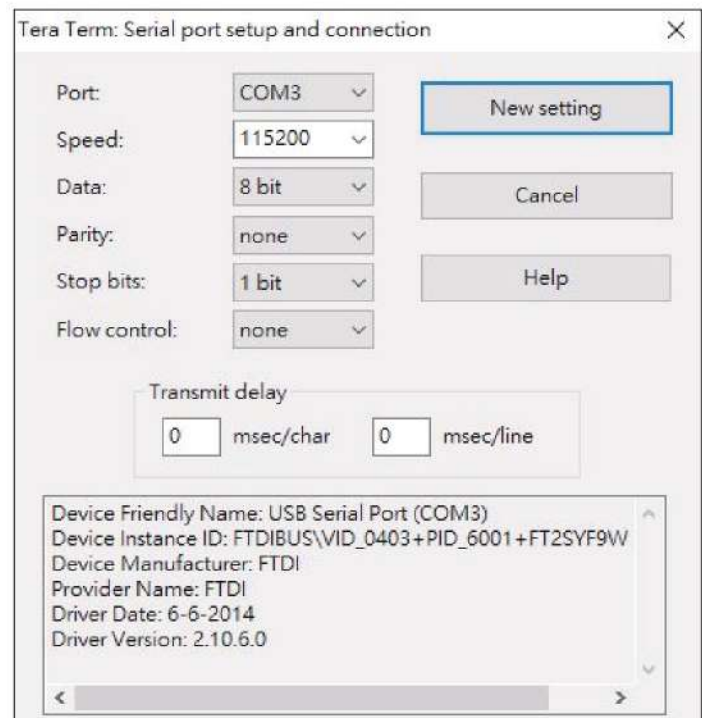


Serial Port

A terminal program is required to make the software connected to the Industrial Managed Switch.

1. Run terminal program on the OS.
2. When the following screen appears, make sure that the COM port should be configured as:

- Baud: 115200
- Parity: None
- Data bits: 8
- Stop bits: 1
- Flow control: None



4.1 Logging on to the Console

Once the terminal has been connected to the device, power on the Industrial Managed Switch and the terminal will display "running testing procedures".



Note

The following console screen is based on the IGS-6329-8UP2S4X. The display of the IGS-6329 series is the same as that of the IGS-6329-8UP2S4X.

Then, the following message asks to log in user name and password. The factory default user name and password are shown as follows as the login screen in Figure 4-1 appears.



Note

The following console screen is based on the firmware version before **April of 2024**.

Username: **admin**

Password: **admin**

```
Username: admin
Password:
IGS-6329-8UP2S4X# █
```

Figure 4-1: Console Login Screen

The user can now enter commands to manage the Industrial Managed Switch. For a detailed description of the commands, please refer to the following chapters.



Note

1. For security reason, **please change and memorize the new password after this first setup.**
2. Only accept command in lowercase letter under console interface.



The following console screen is based on the firmware version of **April of 2024 or after**.

User name: **admin**

Password: **sw + the last 6 characters of the MAC ID in lowercase**

Find the MAC ID on your device label. The default password is "sw" or "mc" followed by the last six lowercase characters of the MAC ID.



MAC ID: A8F7E0XXXXXX

Default Password: sw**xxxxxx**

("x" means the last 6 digits of the MAC address.
All characters should be in lowercase.)

Figure 4-2: Industrial Managed Switch MAC ID Label

Enter the default username and password, then set a new password according to the rule-based prompt and confirm it. Upon success, press any key to return to the login prompt. Log in with "admin" and the "new password" to access the CLI.

```
Generating file "startup-config.cfg"
===== Generating Startup Config Fil

===== Backup Config File Synchroniz
===== Backup Config File Synchroniz

Press any key to continue
Username: admin
Password: b*77*9*****
You are required to change and store
Please store your new password in a
Once configured, also store a copy o
Password: The password must contain
(New)Password: *****
Verify (New)Password: *****
Success.
Press any key to continue
Username: admin
Password: *****
IGS-6329-8UP2S4X#
```

Figure 4-3: Create a New Password and Login Again

The user can now enter commands to manage the Industrial Managed Switch. For a detailed description of the commands, please refer to the following chapters.

4.2 Configuring IP Address via Console

The Industrial Managed Switch is shipped with default IP address shown below:

IP Address: **192.168.0.100**
Subnet Mask: **255.255.255.0**

To check the current IP address or modify a new IP address for the Switch, please use the procedure as follows:

■ Display of the Current IP Address

1. At the “#” prompt, enter “**show ip interface brief**”.

IGS-6329-Series # show ip interface brief

2. The screen displays the current IP address shown in Figure 4-4.

```
IGS-6329-8UP2S4X# show ip interface brief
Interface Address          Method Status
-----
VLAN 1      192.168.0.100/24      Manual UP
IGS-6329-8UP2S4X#
```

Figure 4-4: IP Information Screen

■ Configuration of the IP Address

3. At the “#” prompt, enter the following command and press <Enter> as shown in Figure 4-5.

IGS-6329-Series# **configure terminal**
IGS-6329-Series (config)# **interface vlan 1**
IGS-6329-Series (config-if-vlan)# **ip address 192.168.1.100 255.255.255.0**

The previous command would apply the following settings for the Industrial Managed Switch.

IP Address: **192.168.1.100**
Subnet Mask: **255.255.255.0**

```
IGS-6329-8UP2S4X# configure terminal
IGS-6329-8UP2S4X(config)# interface vlan 1
IGS-6329-8UP2S4X(config-if-vlan)# ip address 192.168.1.100 255.255.255.0
IGS-6329-8UP2S4X(config-if-vlan)#
```

Figure 4-5: Configuring IP Address Screen

4. Repeat step 1 to check if the IP address has changed.

4.3 Storing Current Switch Configuration

1. At the “#” prompt, enter the following command and press **<Enter>**.

```
# copy running-config startup-config
```

```
IGS-6329-8UP2S4X# copy running-config startup-config
Building configuration...
% Saving 3688 bytes to flash:startup-config
IGS-6329-8UP2S4X#
```

Figure 4-6: Saving Current Configuration Command Screen

If the IP is successfully configured, the Industrial Managed Switch will apply the new IP address setting immediately. You can access the Web interface of the Industrial Managed Switch through the new IP address.



Note

If you are not familiar with the console command or the related parameter, enter **“help”** anytime in console to get the help description.

5. Starting Web Management

The following shows how to start up the **Web Management** of the Industrial Managed Switch. Note the Industrial Managed Switch is configured through an Ethernet connection. Please make sure the manager PC must be set to the same **IP subnet address**.

For example, the default IP address of the Industrial Managed Switch is **192.168.0.100**, then the manager PC should be set to **192.168.0.x** (where x is a number between 1 and 254, except 100), and the default subnet mask is 255.255.255.0.

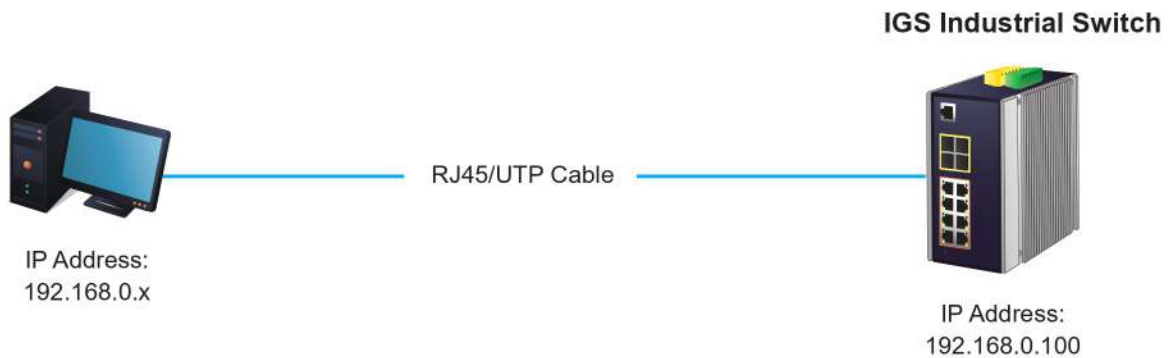


Figure 5-1: IP Management Diagram

5.1 Logging in to the Industrial Managed Switch

1. Use Chrome 98.0.xxx or above for Web browser and enter IP address **<https://192.168.0.100>** (the factory-default IP address) to access the Web interface.

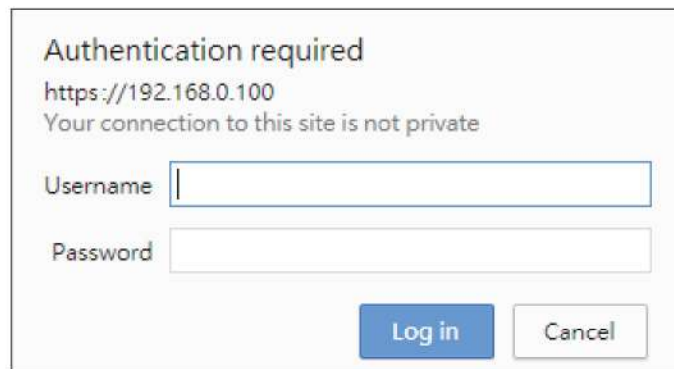


Note

The following web screen is based on the firmware version before **April of 2024**.

- When the following dialog box appears, please enter the default user name **"admin"** and password **"admin"** (or the password you have changed before) as shown in Figure 5-2.

Default IP Address: **192.168.0.100**
Default Username: **admin**
Default Password: **admin**



The dialog box titled "Authentication required" displays the URL "https://192.168.0.100" and the message "Your connection to this site is not private". It contains two input fields: "Username" and "Password". At the bottom right, there are two buttons: "Log in" (highlighted in blue) and "Cancel".

Figure 5-2: Login Screen

- After entering the password, the main screen appears as shown in Figure 5-6.



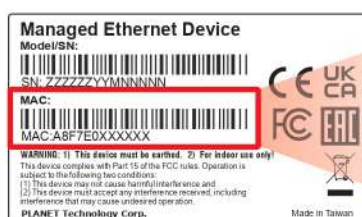
Note

The following web screen is based on the firmware version of **April of 2024 or after**.

- When the following dialog box appears, please enter the default user name **"admin"** and the password. Refer to **Section 4.1** to determine your initial login password.

Default IP Address: **192.168.0.100**
Default User Name: **admin**
Default Password: **sw + the last 6 characters of the MAC ID in lowercase**

- Find the MAC ID on your device label. The default password is "sw" or "mc" followed by the last six lowercase characters of the MAC ID.



MAC ID: A8F7E0XXXXXX
Default Password: swxxxxxx
("x" means the last 6 digits of the MAC address.
All characters should be in lowercase.)

Figure 5-3: Industrial Managed Switch MAC ID Label

Authentication required
https://192.168.0.100
Your connection to this site is not private

Username

Password

Figure 5-4: Login Screen

- After logging in, you will be prompted to change the initial password to a permanent one.

Change Password

New Password

Password	<input type="password"/>	<input type="checkbox"/> show password
Retype Password	<input type="password"/>	

The password must contain 8-31 characters, including upper case, lower case, numerals and other symbols. Please note, spaces (blanks) are not accepted.

Figure 5-5: Create a New Password

- Enter the default username and password, then set a new password according to the rule-based prompt and confirm it. Upon success, press any key to return to the login prompt. Log in with "admin" and the "new password" to access the Web interface.

PLANET
Networking & Communication

IGS-6329-8UP2S4X

System Switching Routing QoS Security PoE Ring ONVIF Maintenance

Sub-menu

Switch Menu

Welcome to PLANET

IGS-6329-8UP2S4X

**Industrial L3 8-Port 10/100/1000T 802.3bt PoE +
2-Port 1G/2.5G SFP + 4-Port 10G SFP+ Managed Ethernet Switch**

PLANET Technology Corporation
11F., No.96, Minquan Rd., Xindian Dist., New Taipei City 231, Taiwan (R.O.C.)
Tel: 886-2-2219-9518
Fax: 886-2-2219-9528
Email: Support@planet.com.tw

Copyright©2021 PLANET Technology Corporation. All rights reserved.

Figure 5-6: Web Main Screen of Industrial Managed Switch

The Switch Menu on the top of the Web page lets you access all the commands and statistics the Industrial Managed Switch provides. The Switch Menu always contains one or more buttons, such as **"System"**, **"Switching"**, **"Routing"**, **"QoS"**, **"Security"**, **"PoE"**, **"Ring"**, **"ONVIF"** and **"Maintenance"**.



Figure 5-7: Switch Menu



Figure 5-8: Example of Switch Sub-menu

Now, you can use the Web management interface to continue the Switch management. Please refer to the user manual for more.



If you are not familiar with Switch functions or the related parameter, press **"Help icon"** anytime on the Web page to get the help description.

5.2 Saving Configuration via Web

To save all applied changes and set the current configuration as a startup configuration, the startup-configuration file will be loaded automatically across a system reboot.

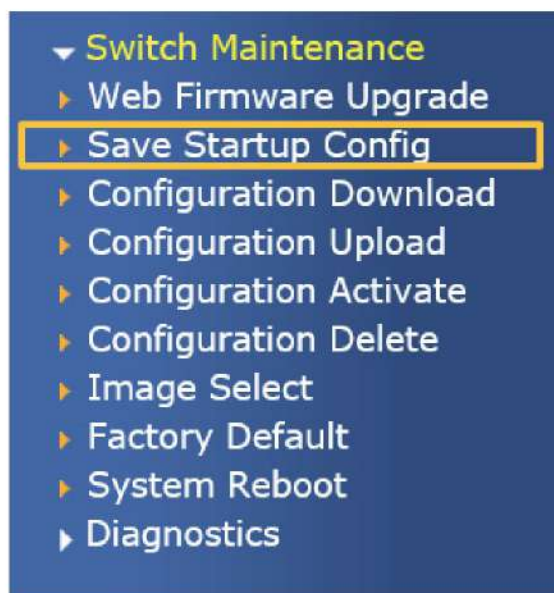
1. Click the **Save** icon on the top Switch Menu bar.



2. Press the **"Save Configuration"** button.



3. Or the other way to save the setting is to Click **Maintenance, Save Startup Config**.



6. Recovering Back to Default Configuration

■ IP address has been changed or admin password has been forgotten –

To reset the IP address to the default IP Address **"192.168.0.100"** and the user name password to factory default mode (default password is admin or sw + the last 6 characters of the MAC ID in lowercase), press the hardware-based **reset button** on the front panel for about **5~10 seconds**. After the device is rebooted, you can log in the management Web interface within the same subnet of 192.168.0.xx and default password. Be noted that all the previous setups will be disappeared after the factory default reset is made.

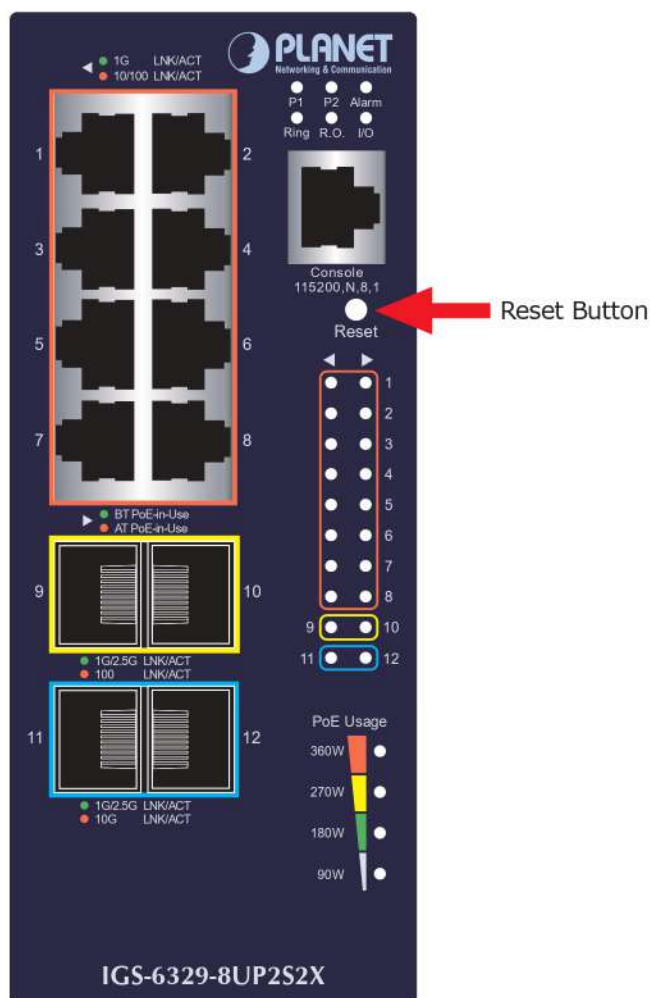


Figure 6-1: IGS-6329-8UP2S2X/IGS-6329-8UP2S4X Reset Button

7. Customer Support

Thank you for purchasing PLANET products. You can browse our online FAQ resource on PLANET web site first to check if it could solve your issue. If you need more support information, please contact PLANET switch support team.

PLANET online FAQs:

<https://www.planet.com.tw/en/support/faq>

Switch support team mail address:

support@planet.com.tw

IGS-6329-DIN-rail Series User's Manual:

<https://www.planet.com.tw/en/support/downloads?&method=keyword&keyword=IGS-6329&view=3#list>



(Please select your switch model name from the Product Model drop-down menu)

Copyright © PLANET Technology Corp. 2024.

Contents are subject to revision without prior notice.

PLANET is a registered trademark of PLANET Technology Corp.

All other trademarks belong to their respective owners.