

Cat.6 CL Patch Cords



R&Mclassic Cat.6 CL patch cords are used for connecting the network equipment to patch panels and telecommunications outlets in price sensitive installations. They are suitable for frequencies of up to 250 MHz. Industry standard Insulation Piercing Contact (IPC) plugs are used to assemble these patch cords.

Features of Cat.6 classic Patch Cord



- Fulfills the requirements of Category 6, Class E (250MHz) channels according to the present standard of TIA-568.2 and ISO/IEC 11801
- Complies with the specifications of the IEC 60603-7 / IEC 60603-7-1 connector standard
- IPC wire termination according to IEC 60352-6
- Supports PoE (IEEE 802.3af), PoEP (IEEE 802.3at), 4PPoE (IEEE 802.3bt) and is compatible to IEC 60512-99-001/002 (*)
- Tested according to IEC 61935-2
- Lengths from 0.5 to 20m available
- Impedance of 100Ω
- LSZH versions, conforming to IEC 60754-1, IEC 61034, IEC 60332-1-2
- Available in grey (standard) and 8 additional different colors (yellow, red, blue, green, orange, black, violet, white)
- Channel length calculation factor: 1.5

Cat.6 CL Patch Cords Data Sheet

Materials

Plug Housing	Contacts	Contact Plating	Shielding
UL 94-V0 polycarbonate	Bronze (CuSn6)	1,27 μm gold plate	Brass with nickel plated

Electrical Characteristics

General	Current Rating	Dielectric Withstanding Voltage	Insulation Resistance @20°C 100VDC
Compliant to 60603-7	1.5A @ 25°C	1000 VDC	≥500 MΩ

Mechanical Characteristics

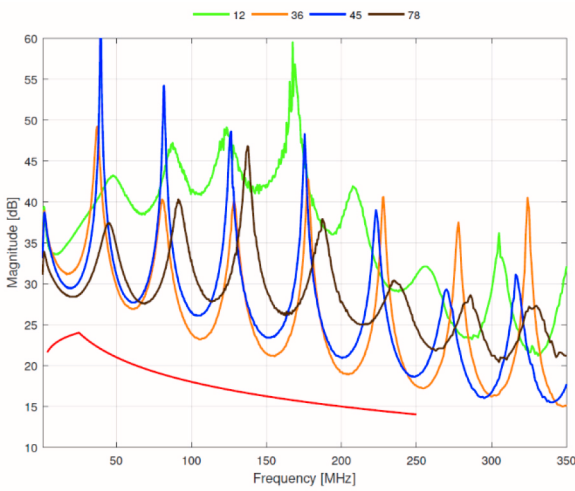
Environmental Characteristics

Plug Tolerances and Dimensions	Operating Temperature	Storage Temperature
Compliant to IEC 60603-7	-10°C to +60°C	-40°C to +60°C

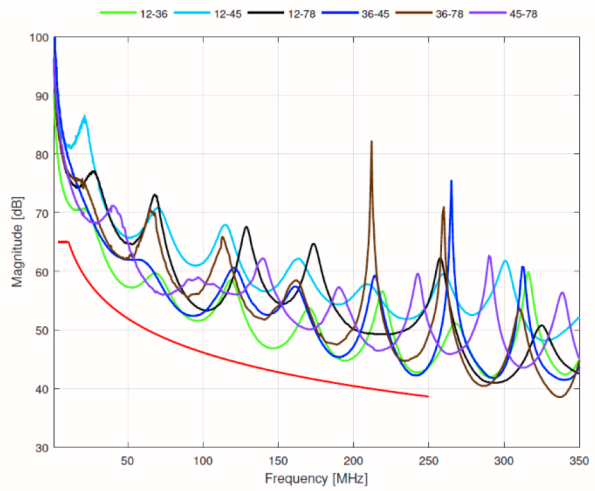
Patch Cord Characteristics Cat.6 CL

	unshielded	shielded
Inner conductor diameter	AWG26/7	AWG26/7
Cable construction	U/UTP	U/FTP
Number of pairs	4	4
Screen per pair	None	AL- foil shield (terminated to plug shield)
Outer screen	None	None
Jacket	LSZH	LSZH
Bending radius	≥35mm operation (without load)	≥50mm operation (without load)
Outer diameter	nominal 4.5 mm	nominal 5.7 mm
Wiring method	standard: TIA568A, optional: TIA568B	
Jacket colours (similar to RAL)	grey (7035), yellow (1021), red (3031), blue (5015), green (6029), orange (2003), black (9011), violet (4005), white (9010)	

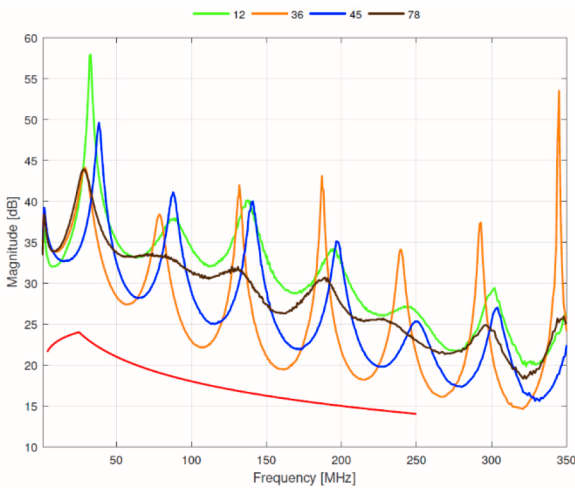
Typical Return Loss Cat.6 CL /u patch cord 2m



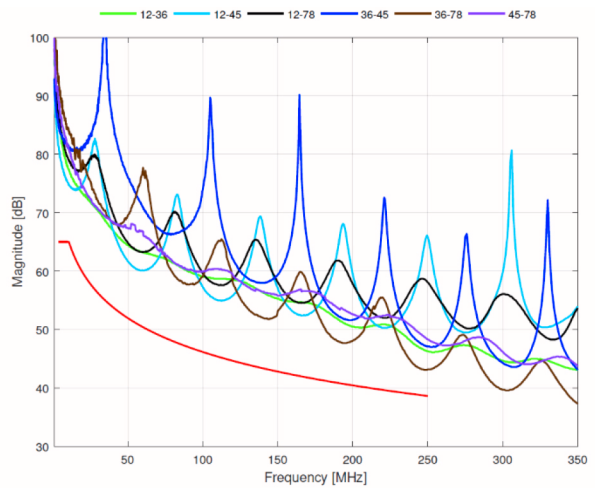
Typical NEXT Cat.6 CL /u patch cord 2m



Typical Return Loss Cat.6 CL /s cord 2m



Typical NEXT Cat.6 CL /s cord 2m



(*) Due to the inherent IPC properties and its limitations, R&M recommends to use PowerSafe patch cords for installations with continuous PoE applications or 4PPoE.